

Exploration, drilling, well completion and testing of deep-seated aquifers

Leif Bjelm, prof.

Engineering Geology, Lund University, Sweden.

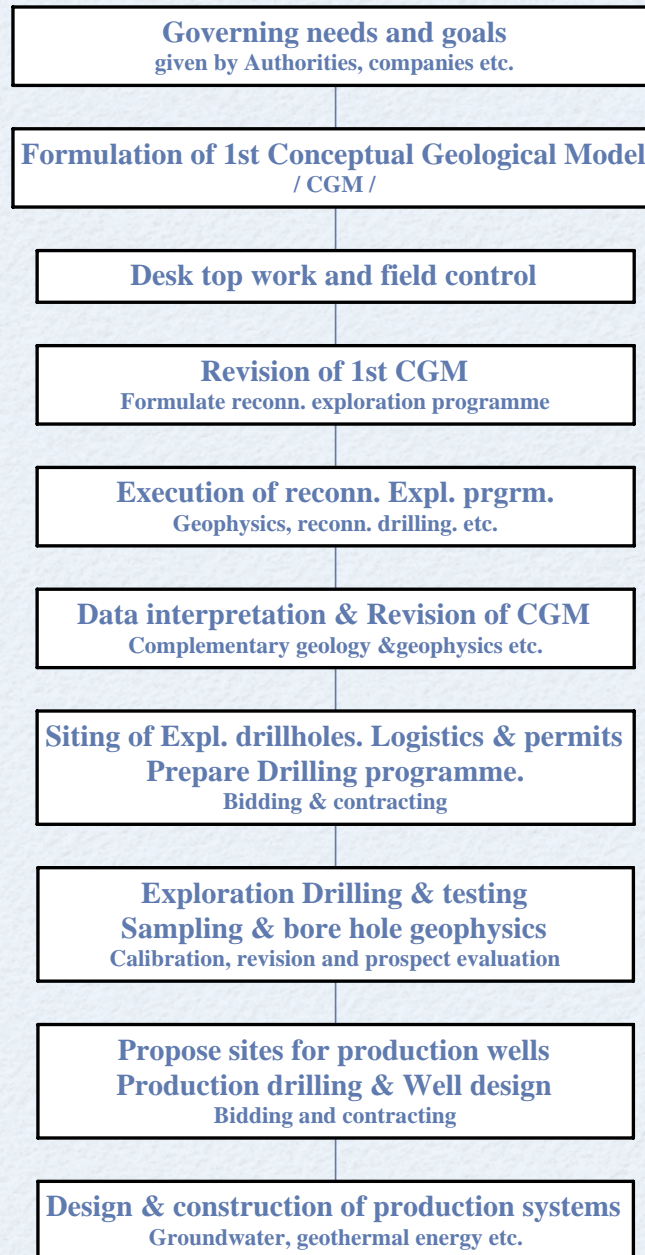
ARGeo C-1. Addis Abeba, 2006.





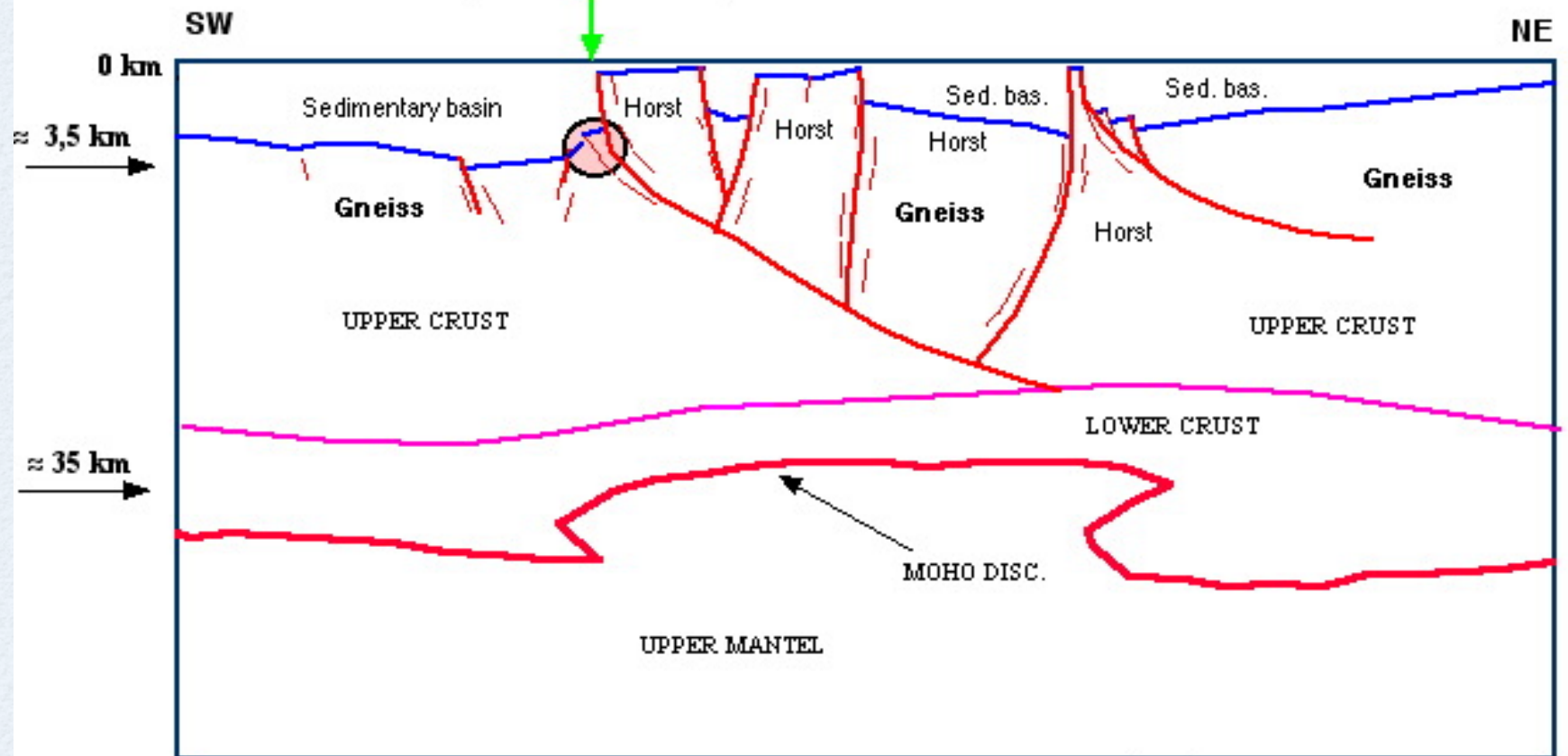
Lund in Europe adjacent to the Tornquist zone, TZ

Exploration Scheme

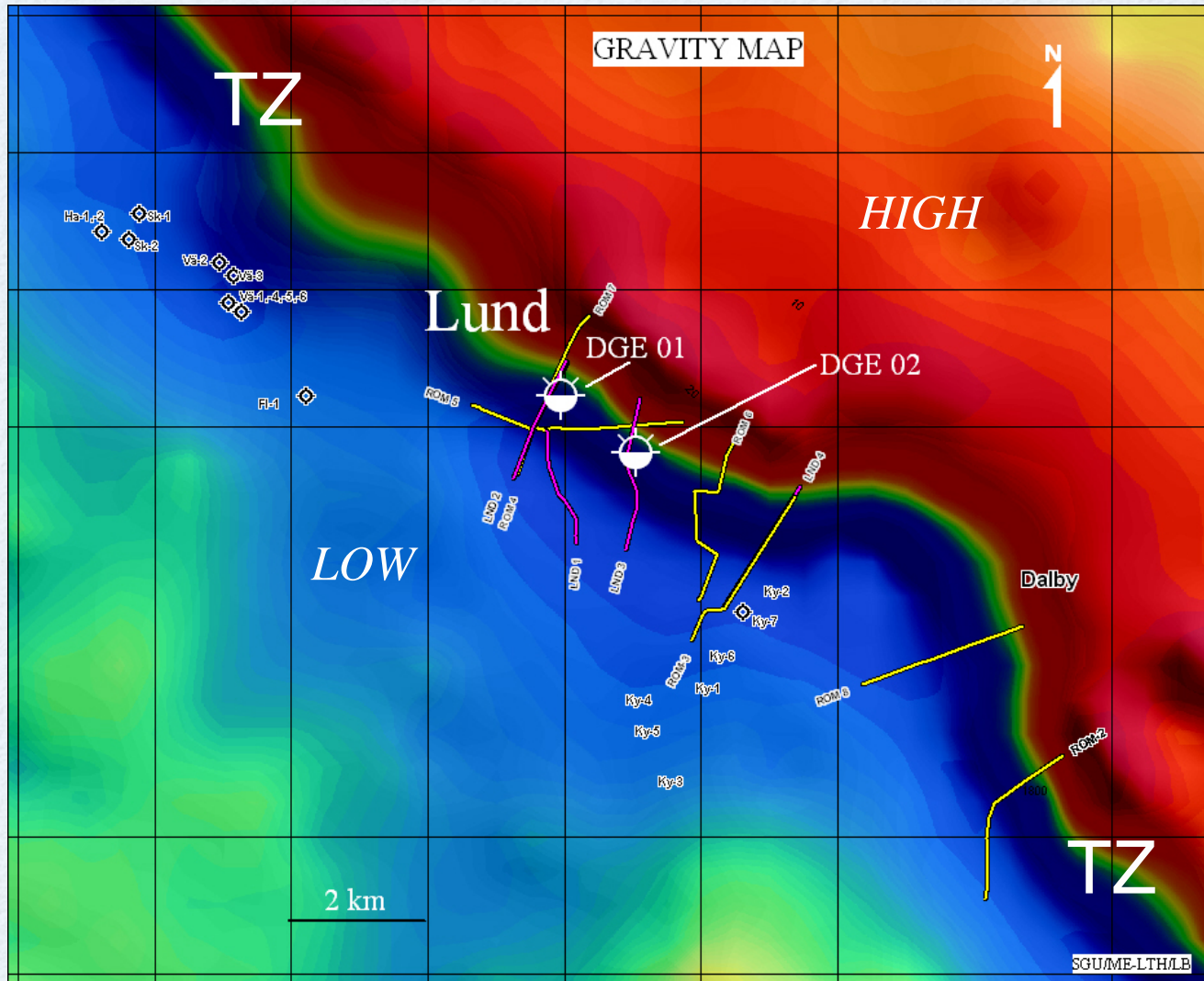


THE TORNQUIST ZONE

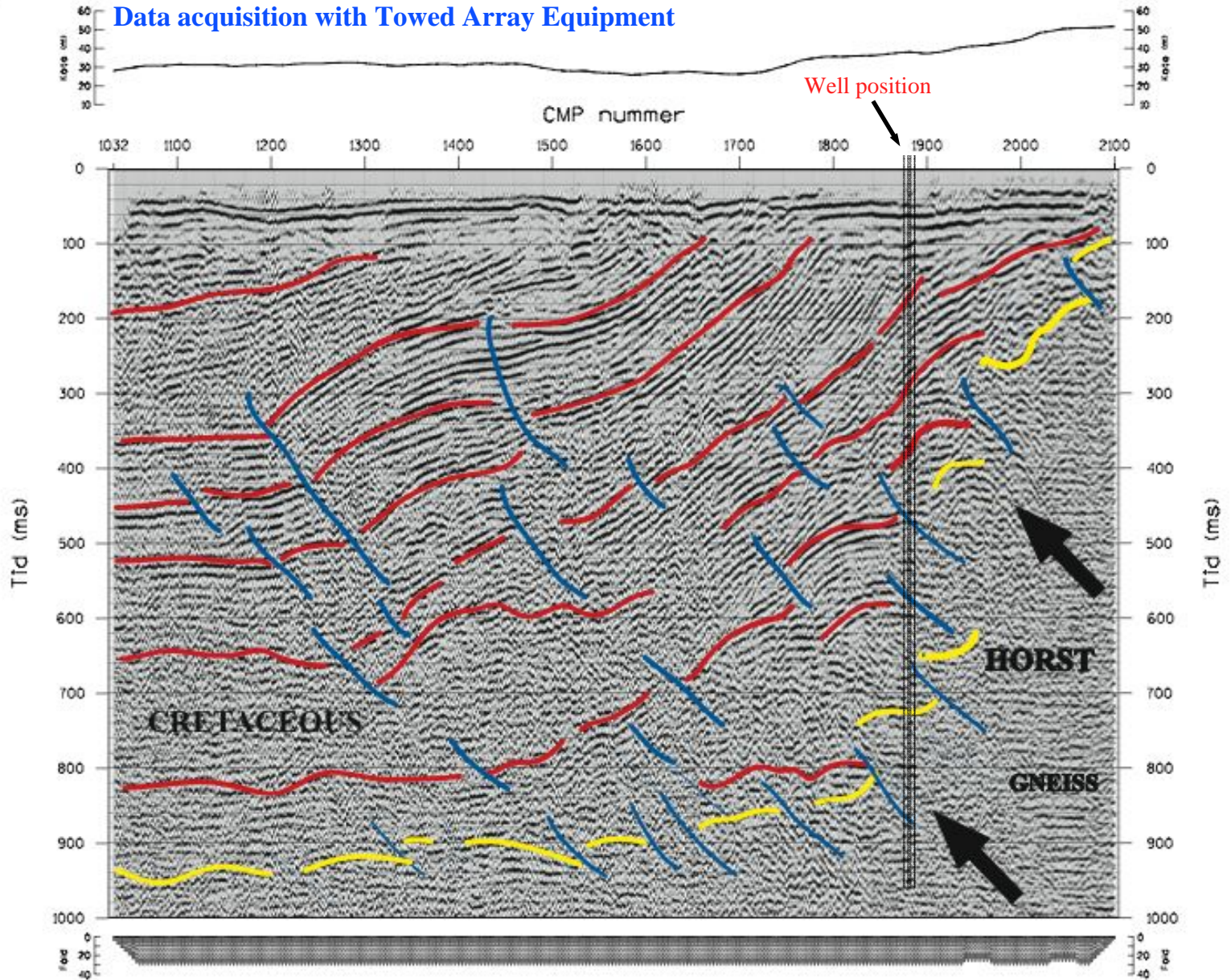
WELL DGE # 1



Modified after the the BABEL seismic data. U 20020977.



Data acquisition with Towed Array Equipment



The following drilling methods were used

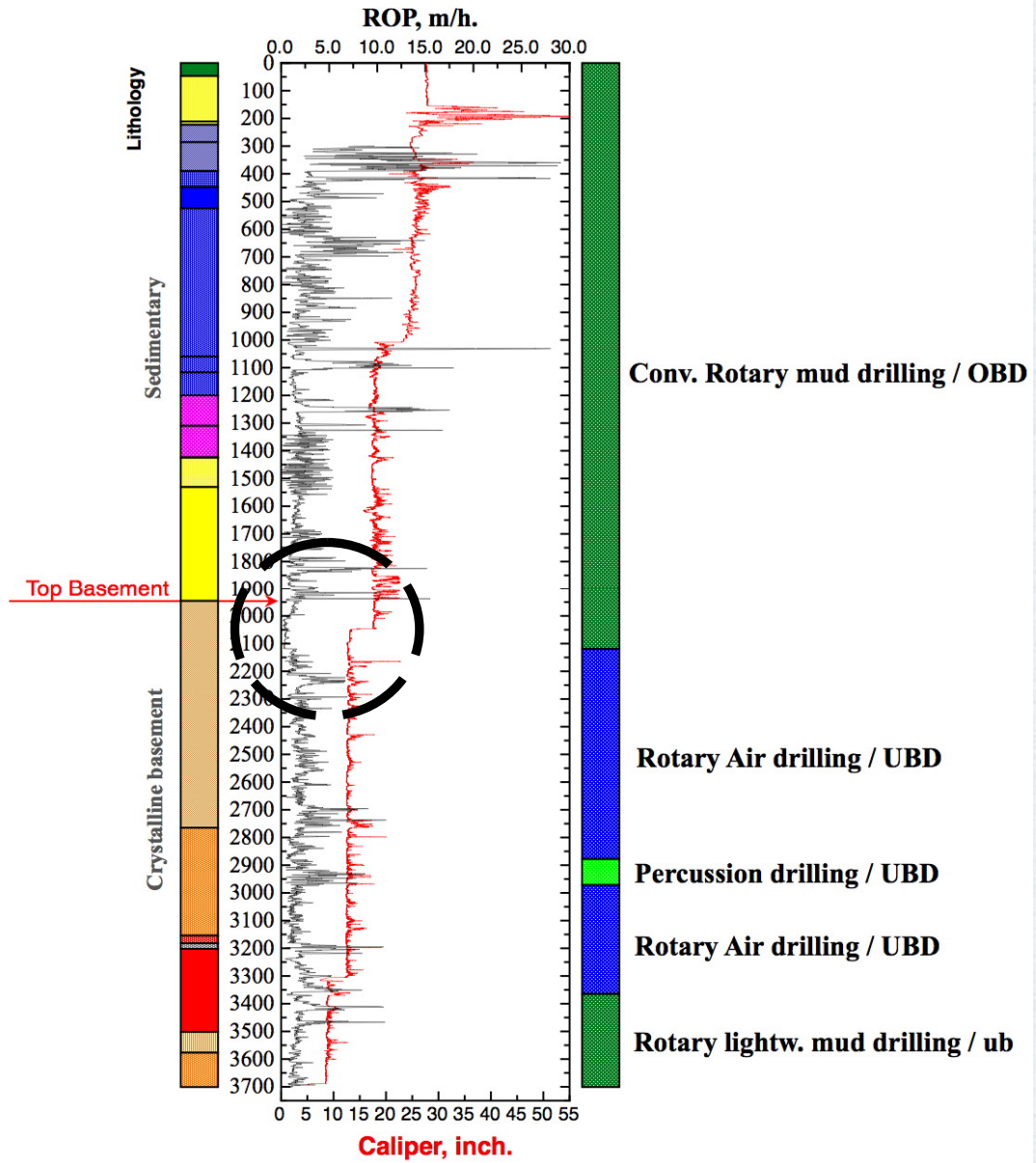
Conventional rotary drilling with mud

Rotary air drilling / UBD

Percussion drilling/Hammer drilling /UBD

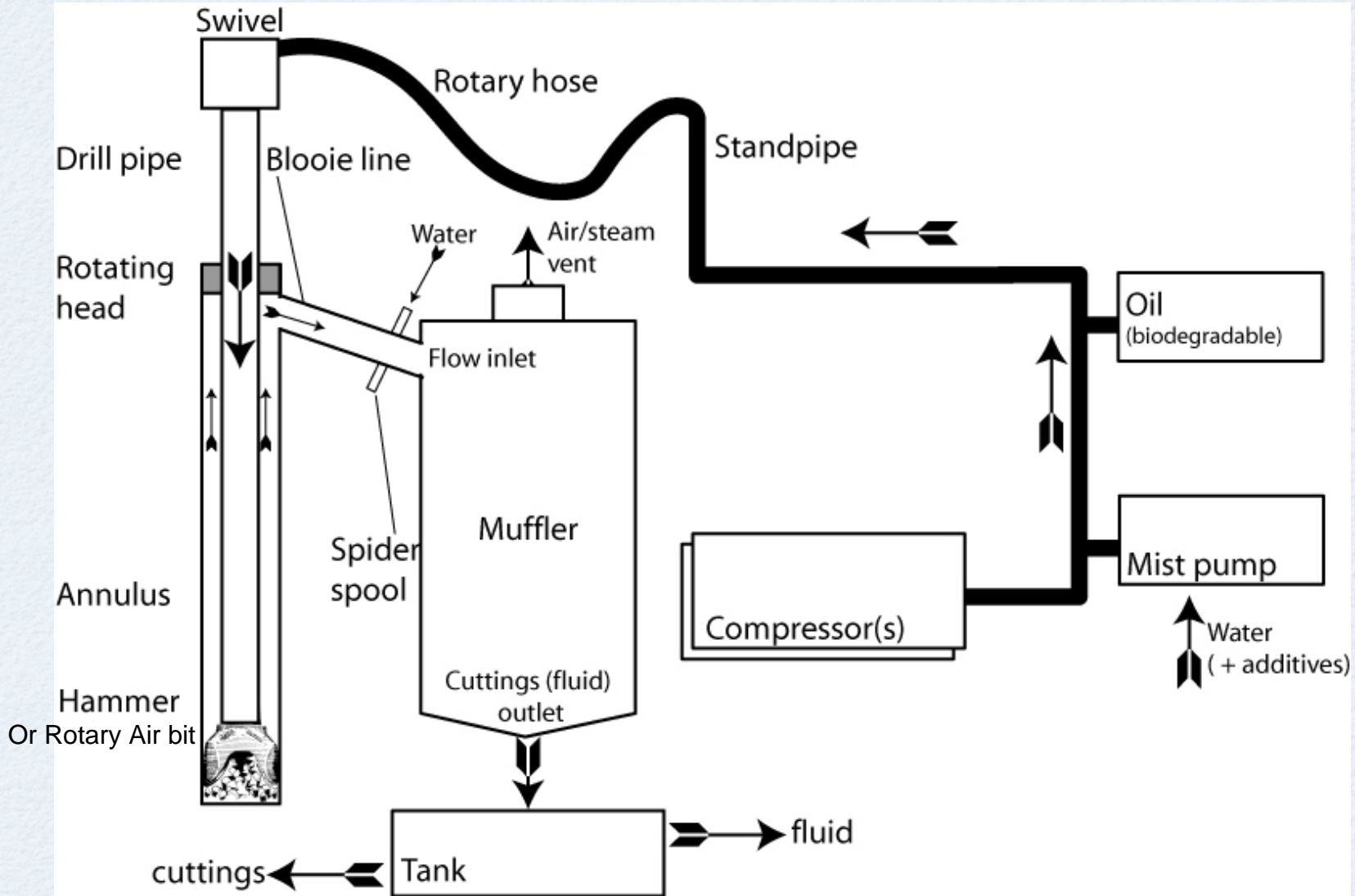
Mud Hammer drilling

Composite drilling graph



Note: Below 3200 m ROP data are from after Whip stock operation.

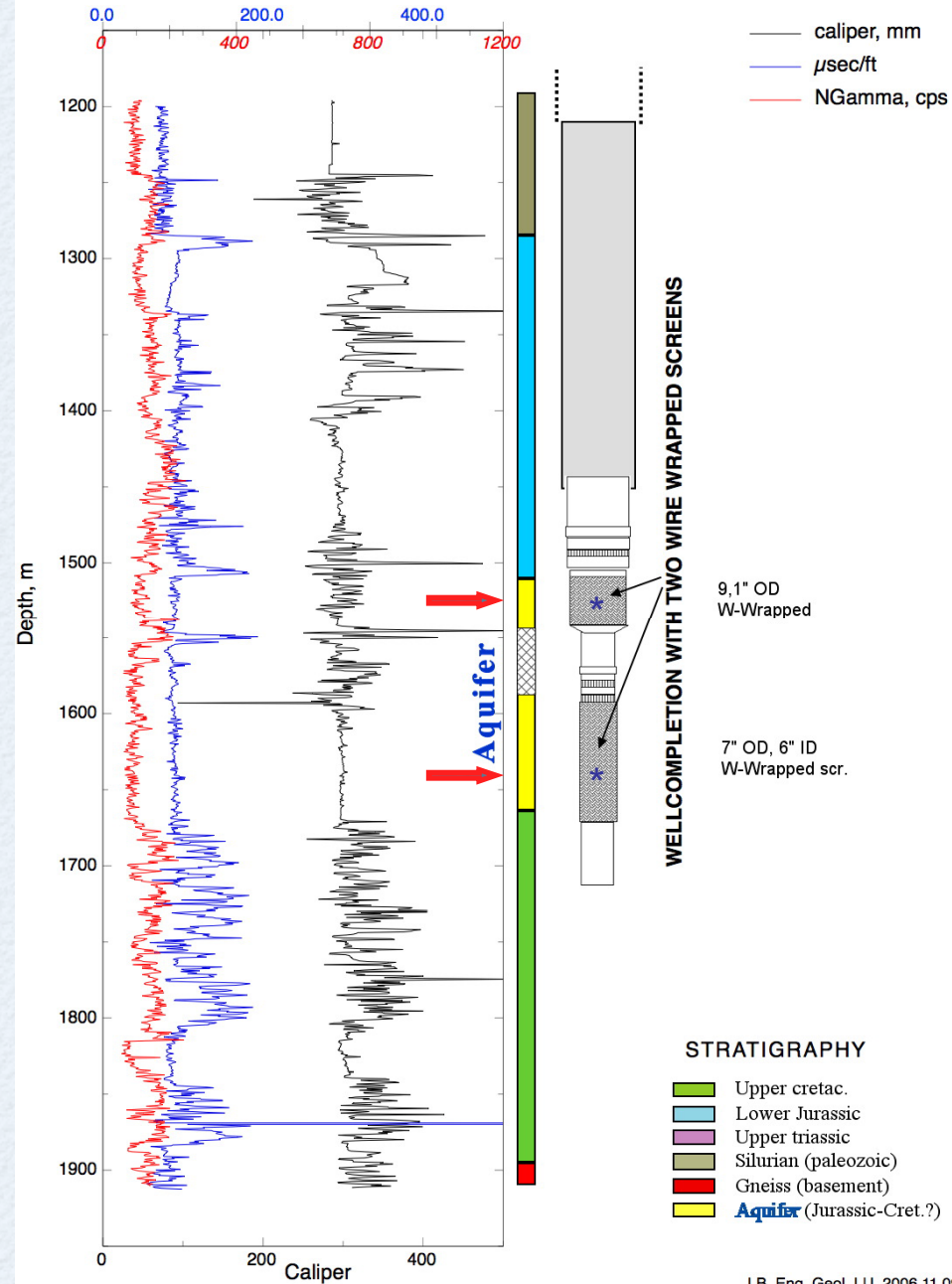
AIR DRILLING SET UP USED FOR DGE #1



Air lift of DGE 01

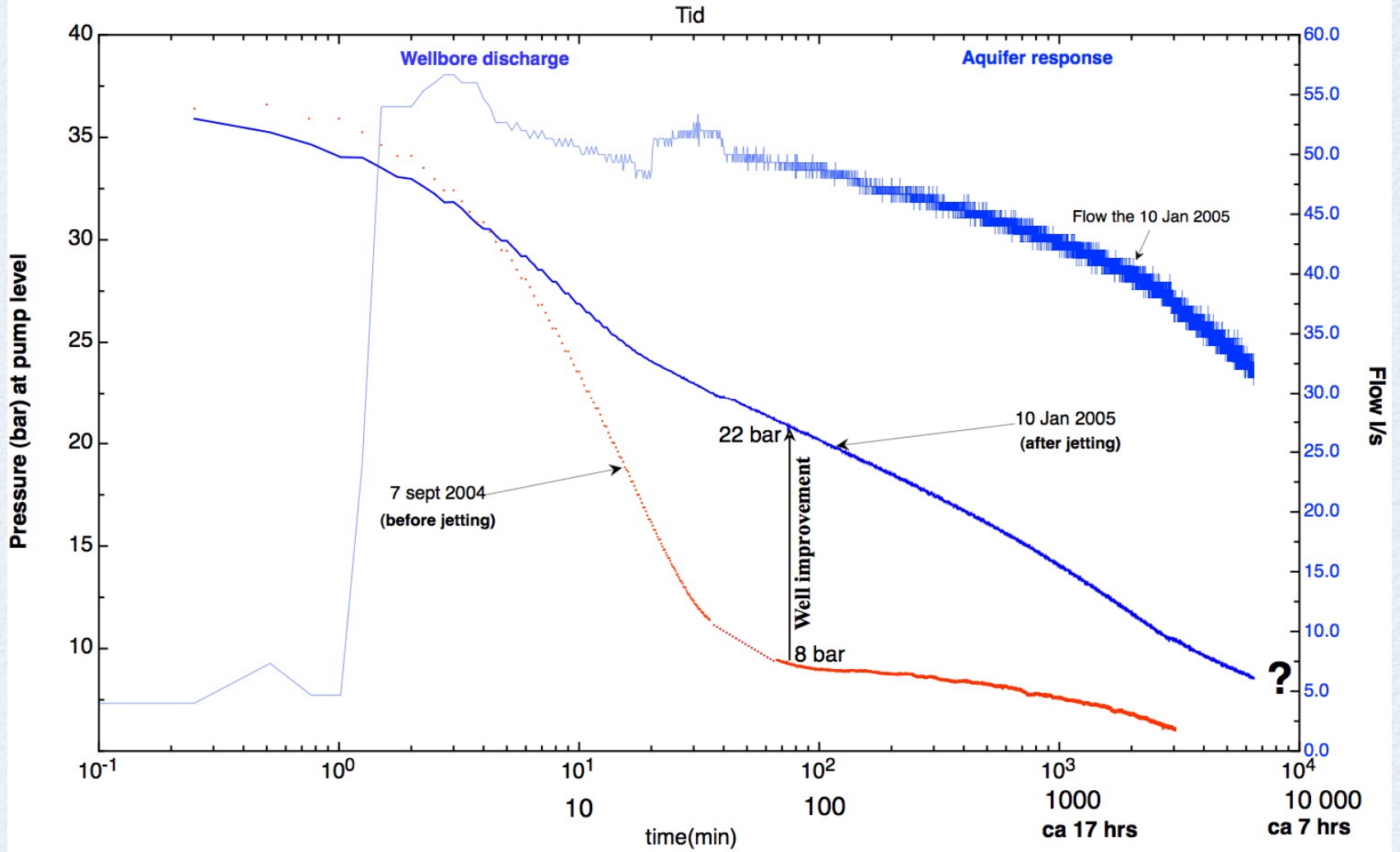


DGE 02, WELLCOMPLETION & LOGGING DATA.

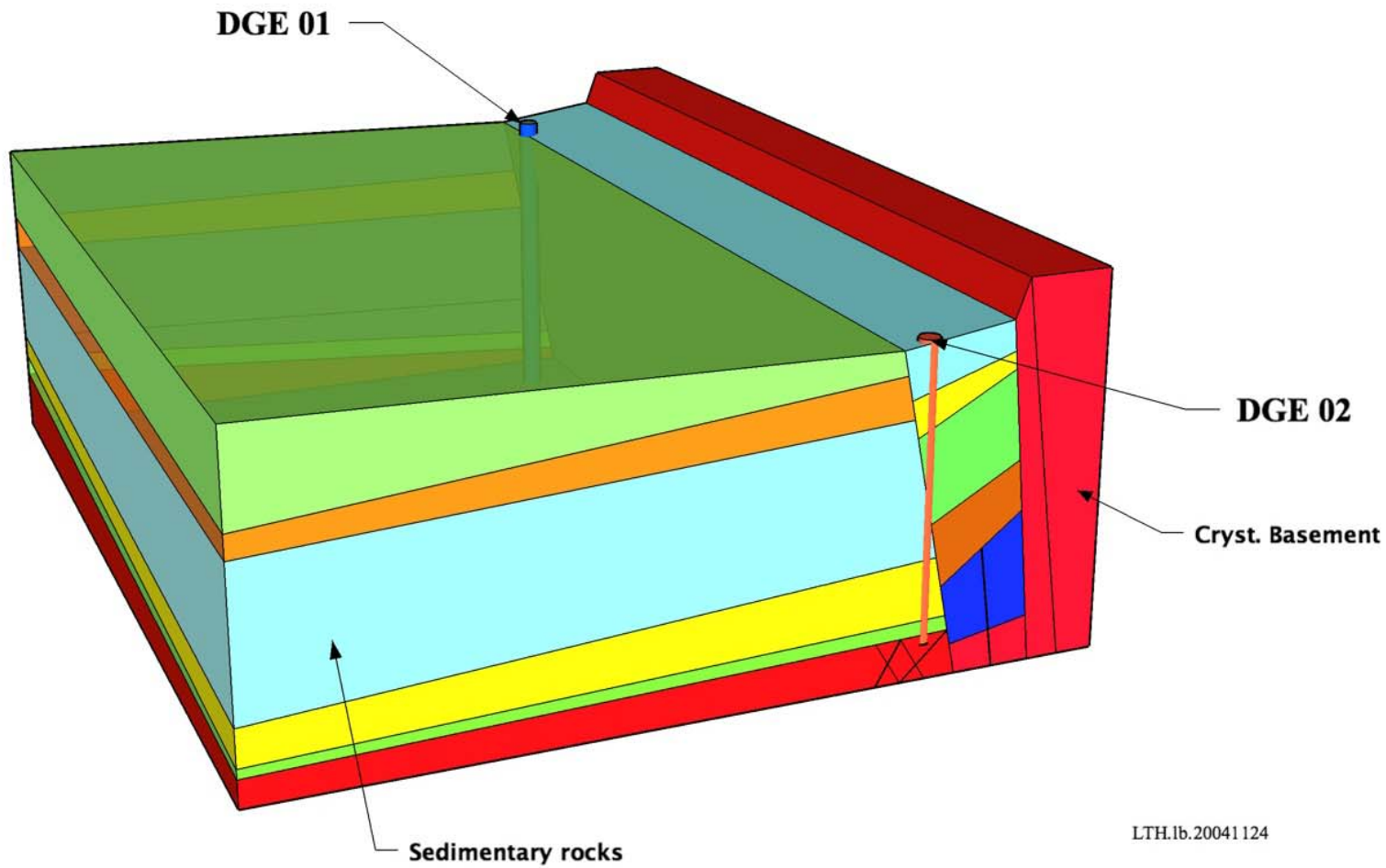


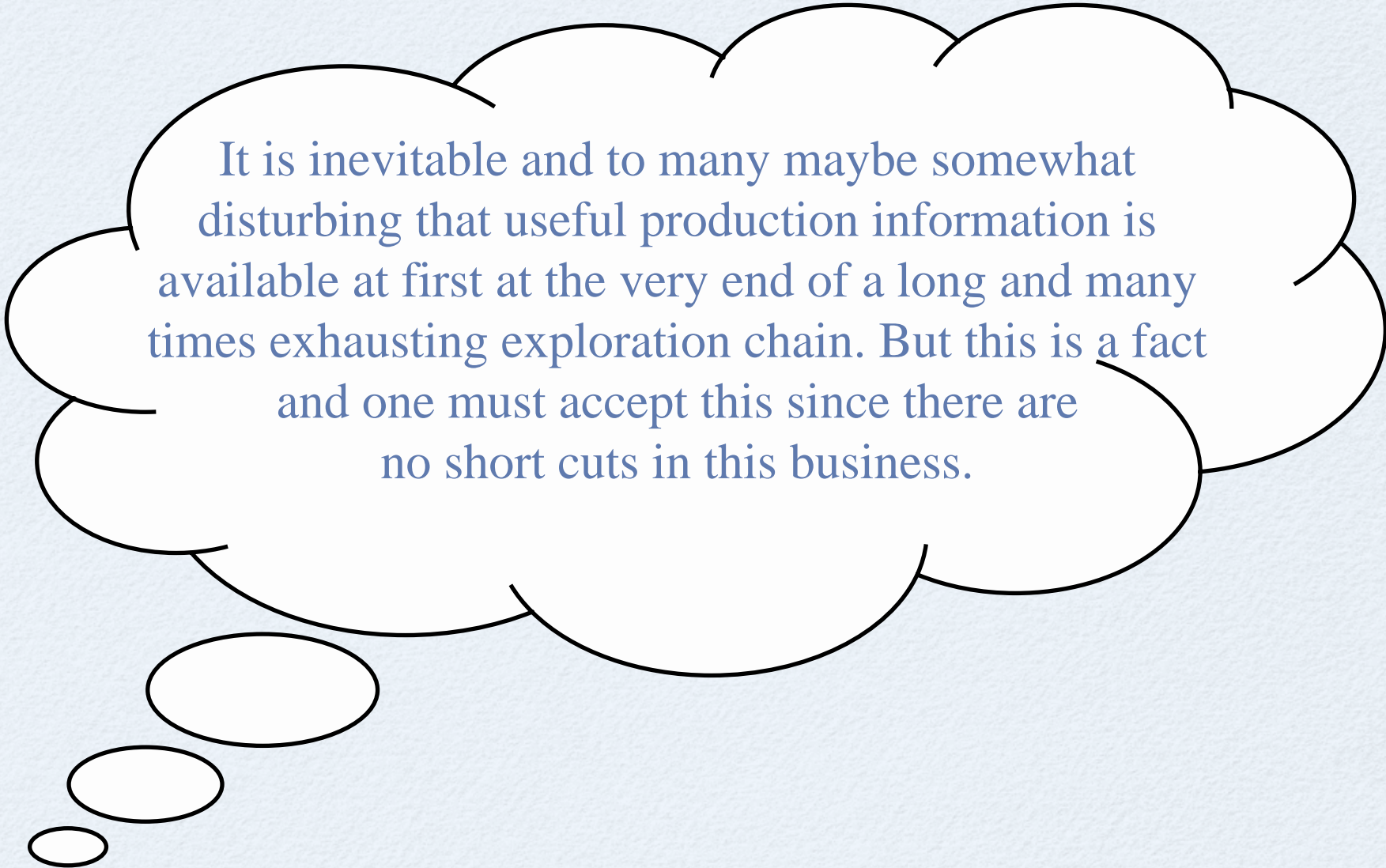
DGE 02

Short term test pumping before and after screen jetting



Post-drilling Geomodel concept





It is inevitable and to many maybe somewhat disturbing that useful production information is available at first at the very end of a long and many times exhausting exploration chain. But this is a fact and one must accept this since there are no short cuts in this business.

THANK
YOU



LUND
UNIVERSITY